

Comprehensive Cancer Center Zürich

Cancer Academy - Von der Refluxkrankheit zum Speiseröhrenkarzinom

# Vorstufen und Frühform des Speiseröhrenkrebses: Therapie aus Sicht des interventionellen Gastroenterologen

---

Christoph Gubler, Klinik für Gastroenterologie und Hepatologie USZ



UniversitätsSpital  
Zürich

Der **Balgrist**



UNIVERSITÄTS-  
KINDERSPITAL  
ZÜRICH



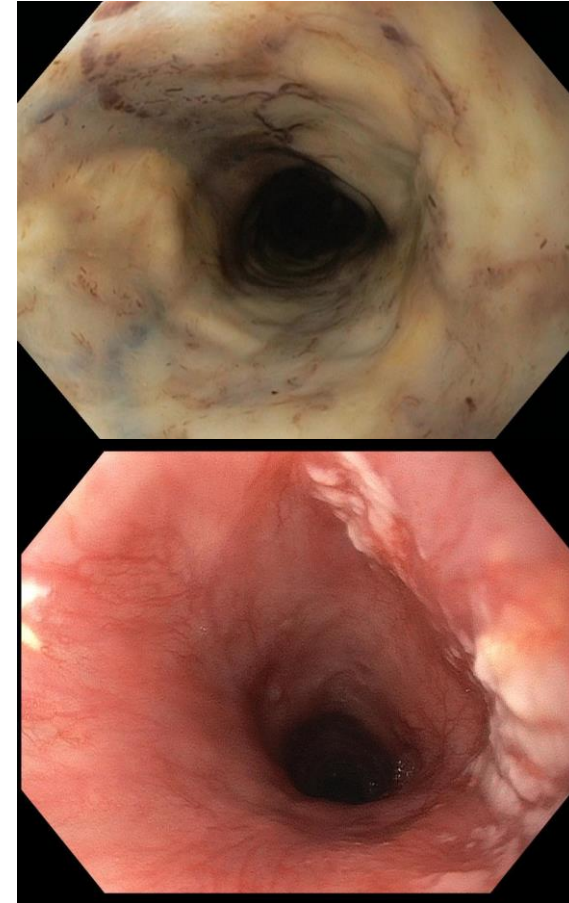
Universität  
Zürich <sup>UZH</sup>

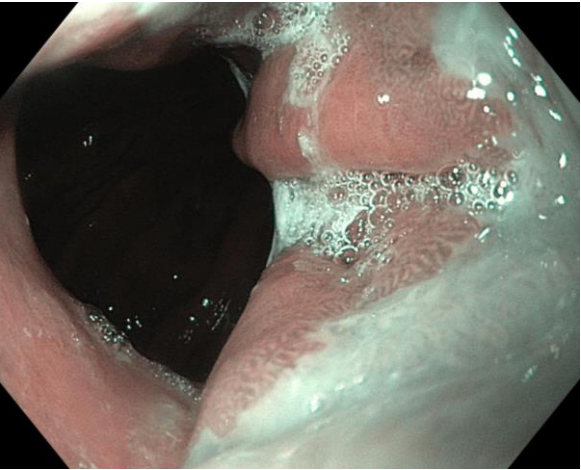
## Ursachen für Vorstufen & Frühformen

- Substanzen: Nikotin und Alkohol
- Reflux und Barrett-Oesophagus

- Kaustische Verletzungen = Verätzungen  
>15 Jahre

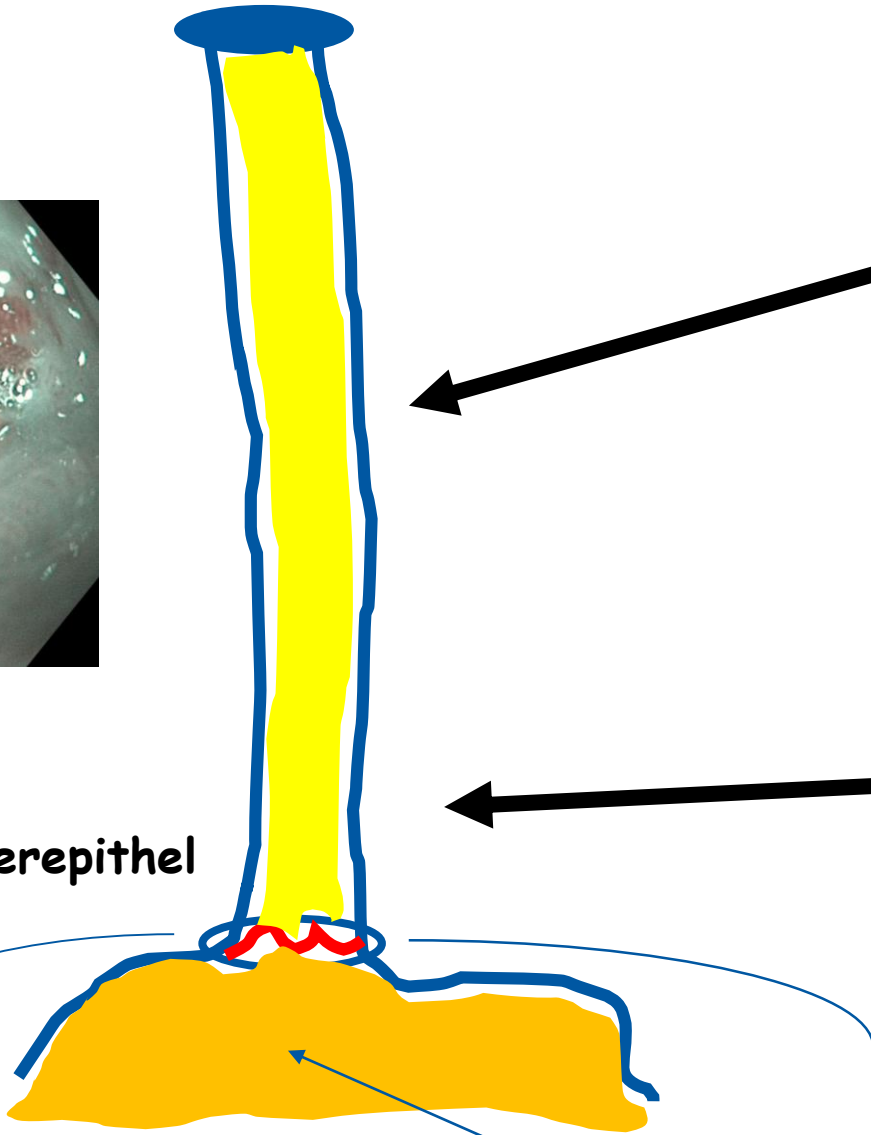
- Tylosis = Howel-Evans-Syndrom





Z-Linie:  
Grenze  
Platten- zu Zylinderepithel

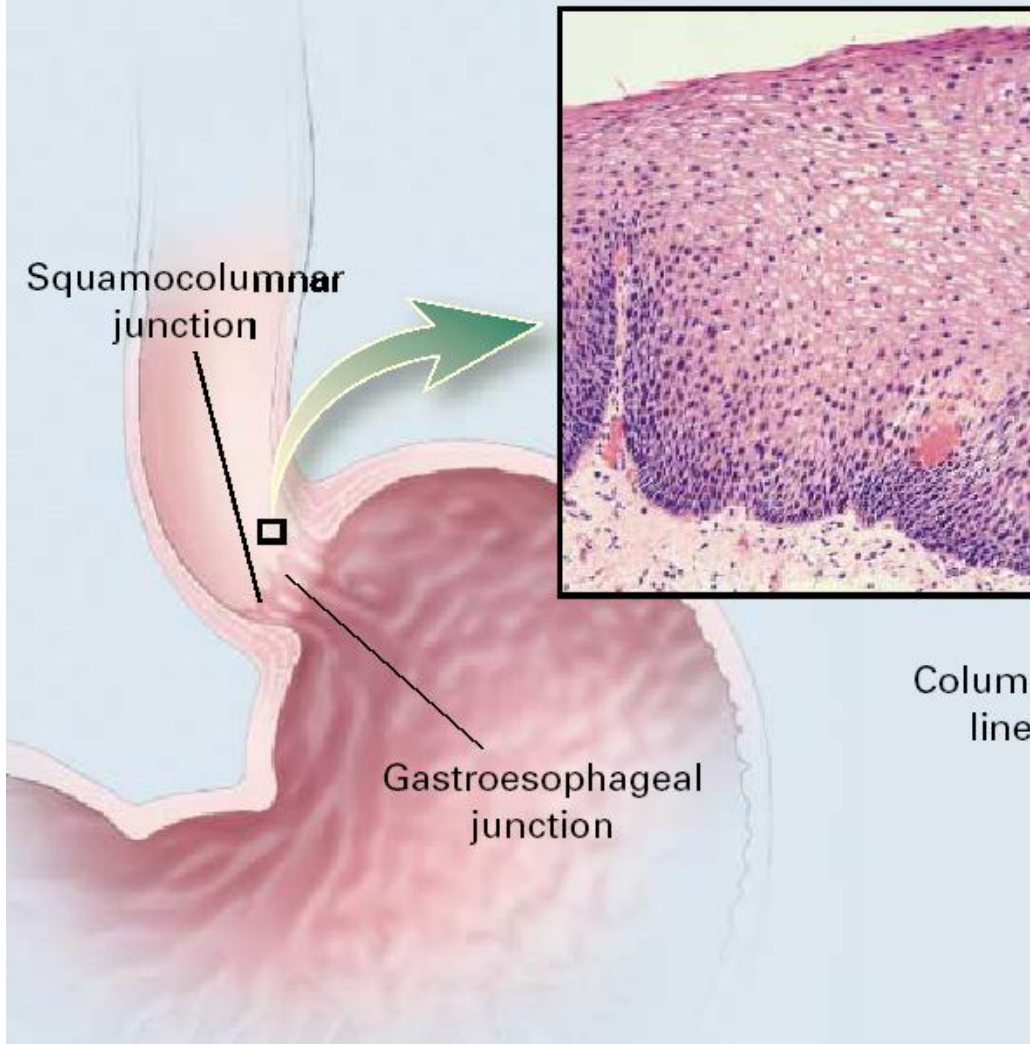
Zwerchfell



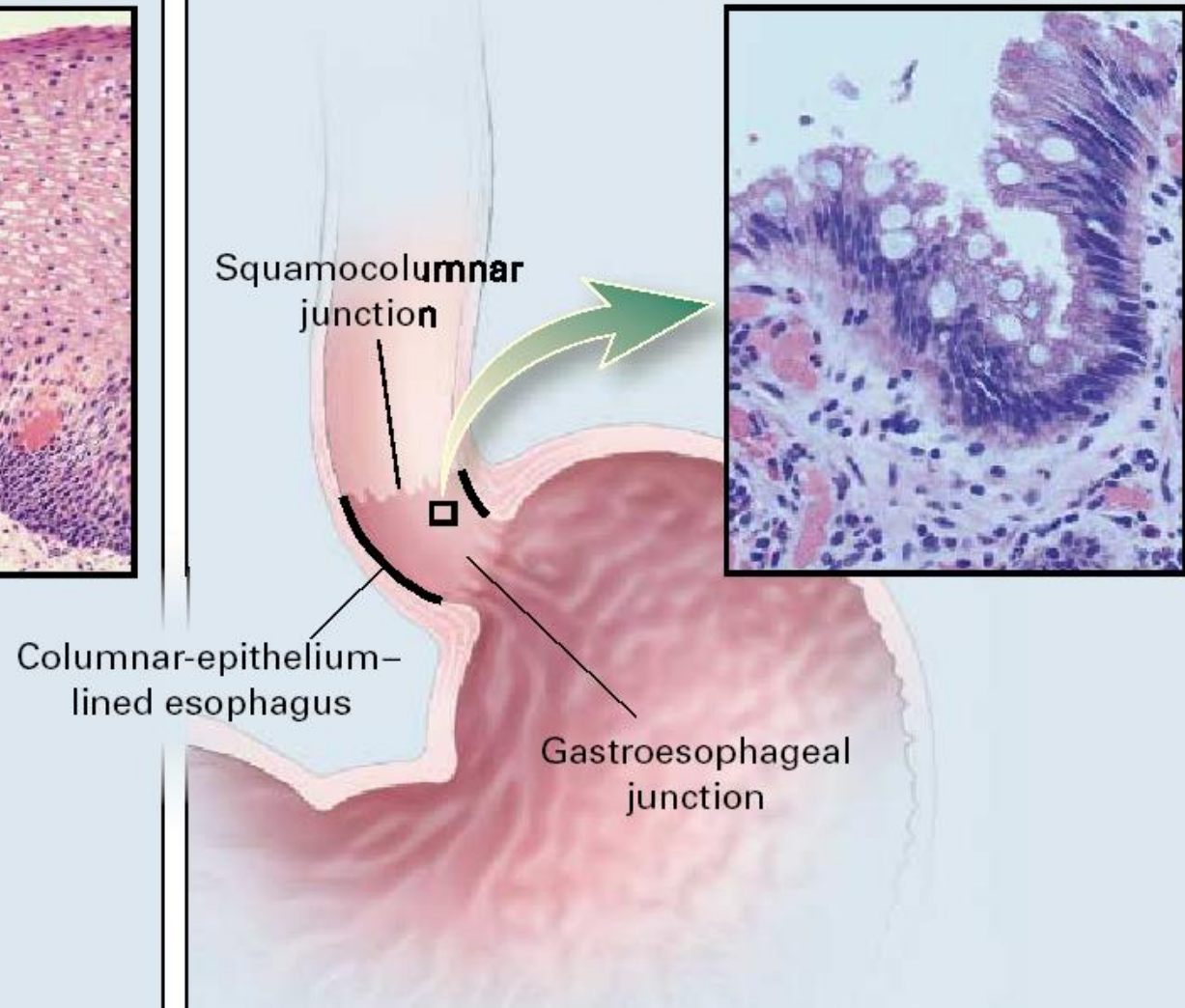
Fundus =  
erster Abschnitt Magen

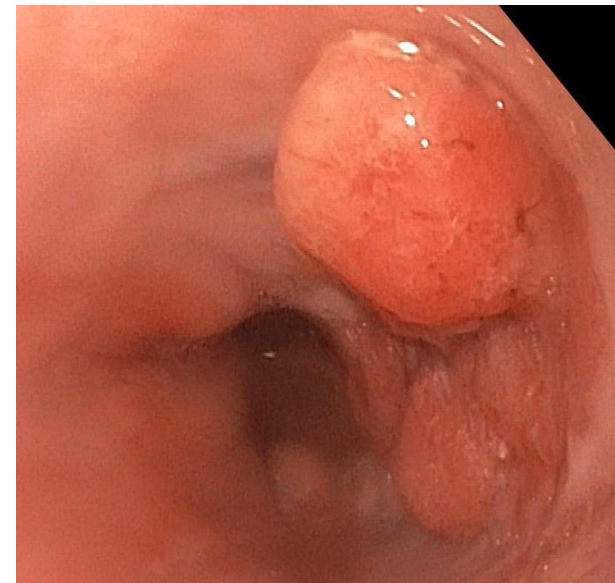
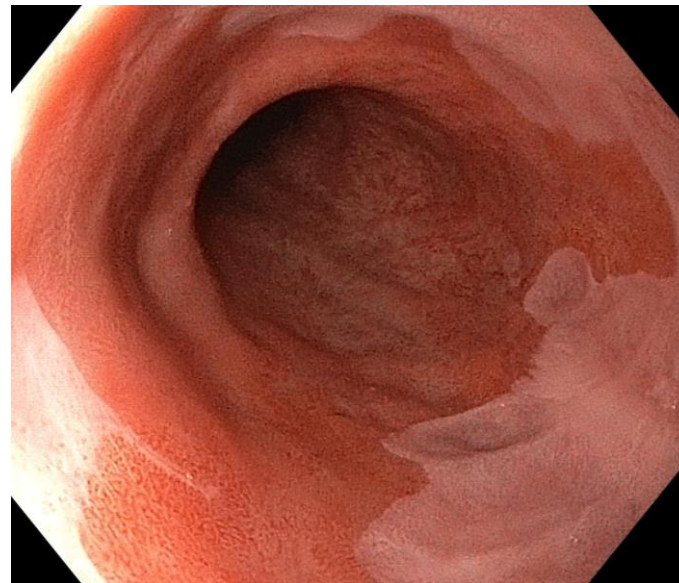
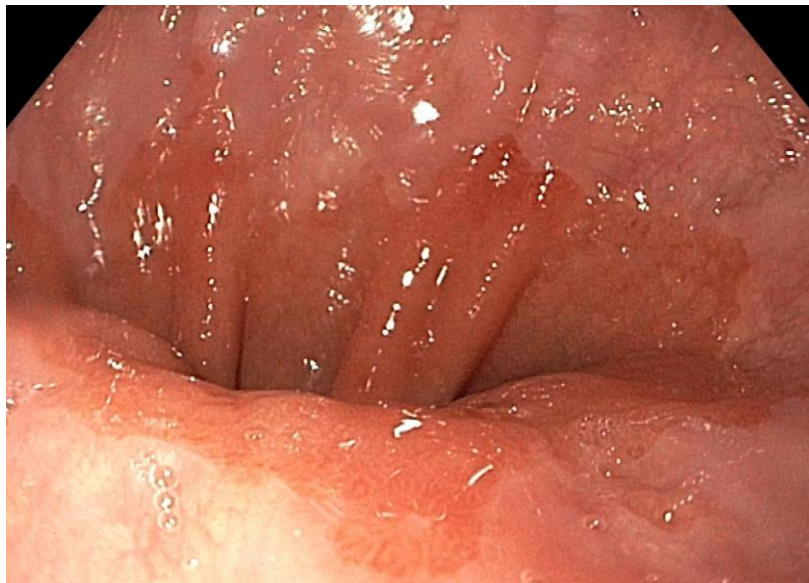
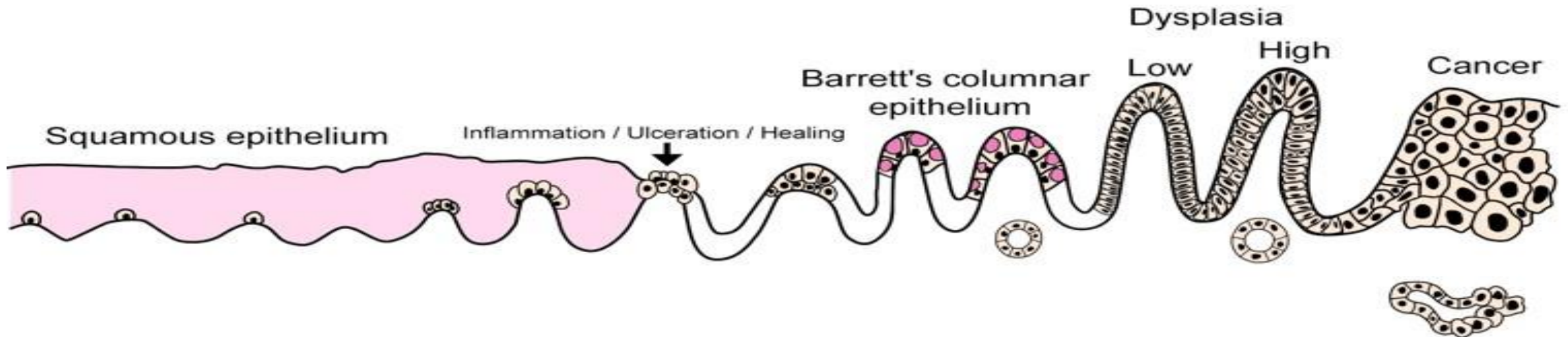


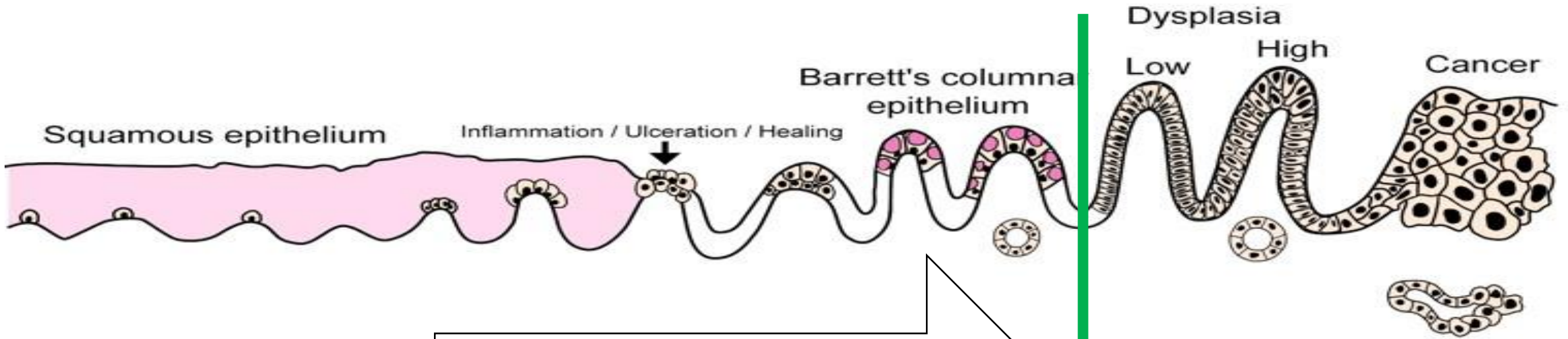
## Normal esophagus



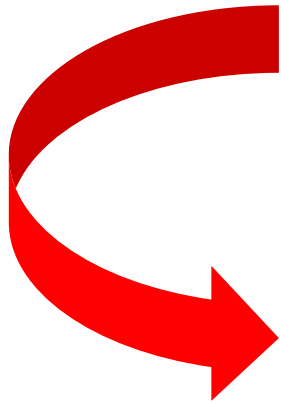
## Barrett's esophagus





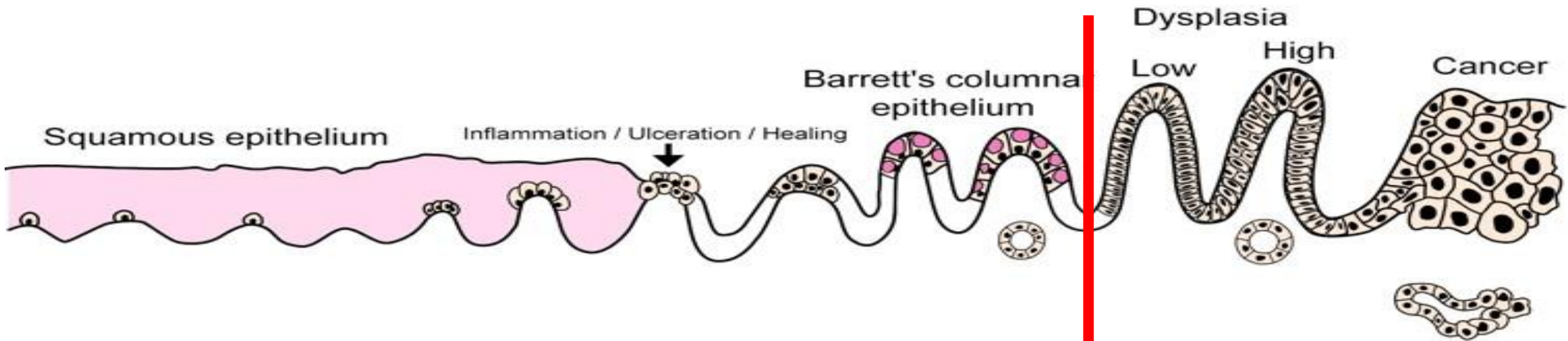


Suche Barrett?  
 Screening nein  
**Risikofaktoren** individuell



- weisse Männer
- > 50-jährig
- langjährige Refluxkrankheit
- Erhöhter BMI
- Hiatushernie
- Nikotin

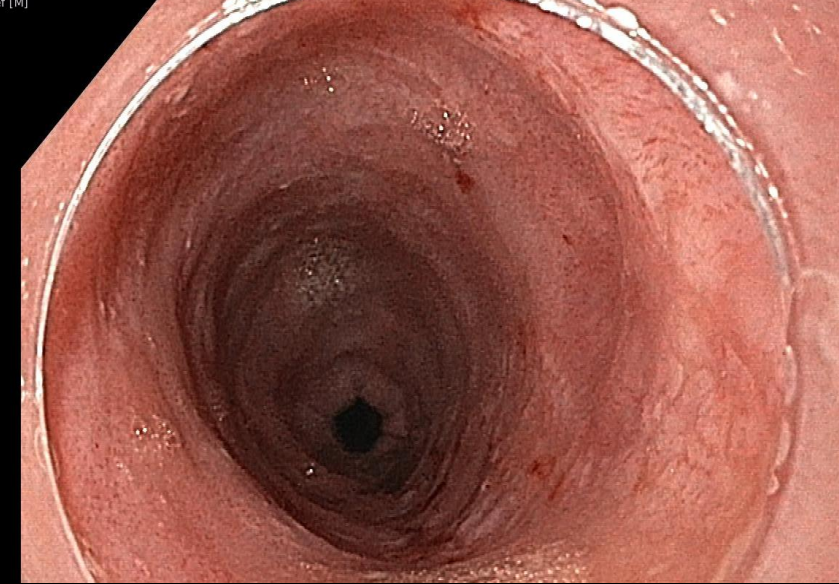




*Wie findet man Vorstufen?*

- Inspektion
- Färbungen
- Biopsien

Überwachung Barrett  
Therapie Vorstufen  
Therapie Frühkarzinom



Plattenepithel: Inspektion



+ Filterfunktion



Färbung mit Jod

Reinigung

Gute lange Inspektion

Einsatz Filter = virtuelle Färbung

Färbung mit Jod bei **Plattenepitheldysplasie/-karzinom**



UniversitätsSpital  
Zürich



Universität  
Zürich<sup>UZH</sup>

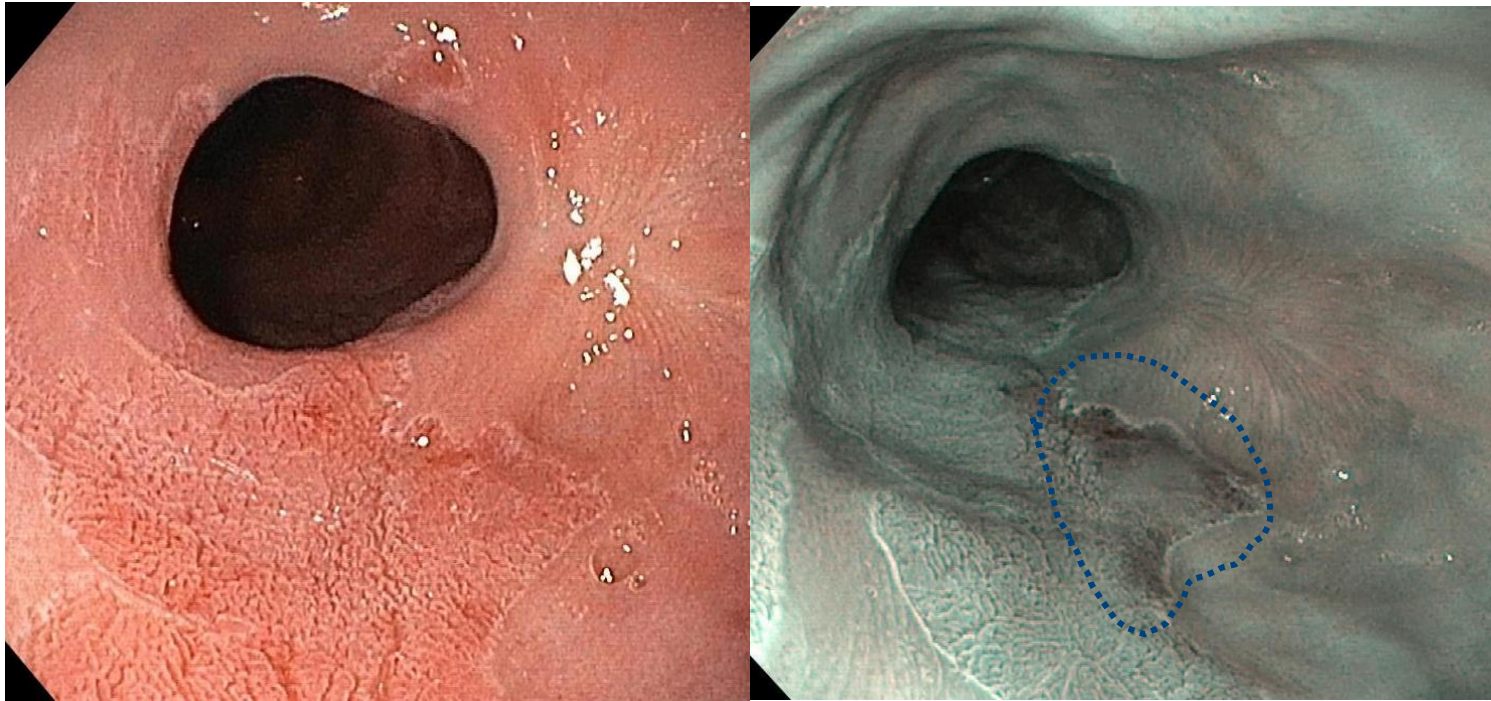


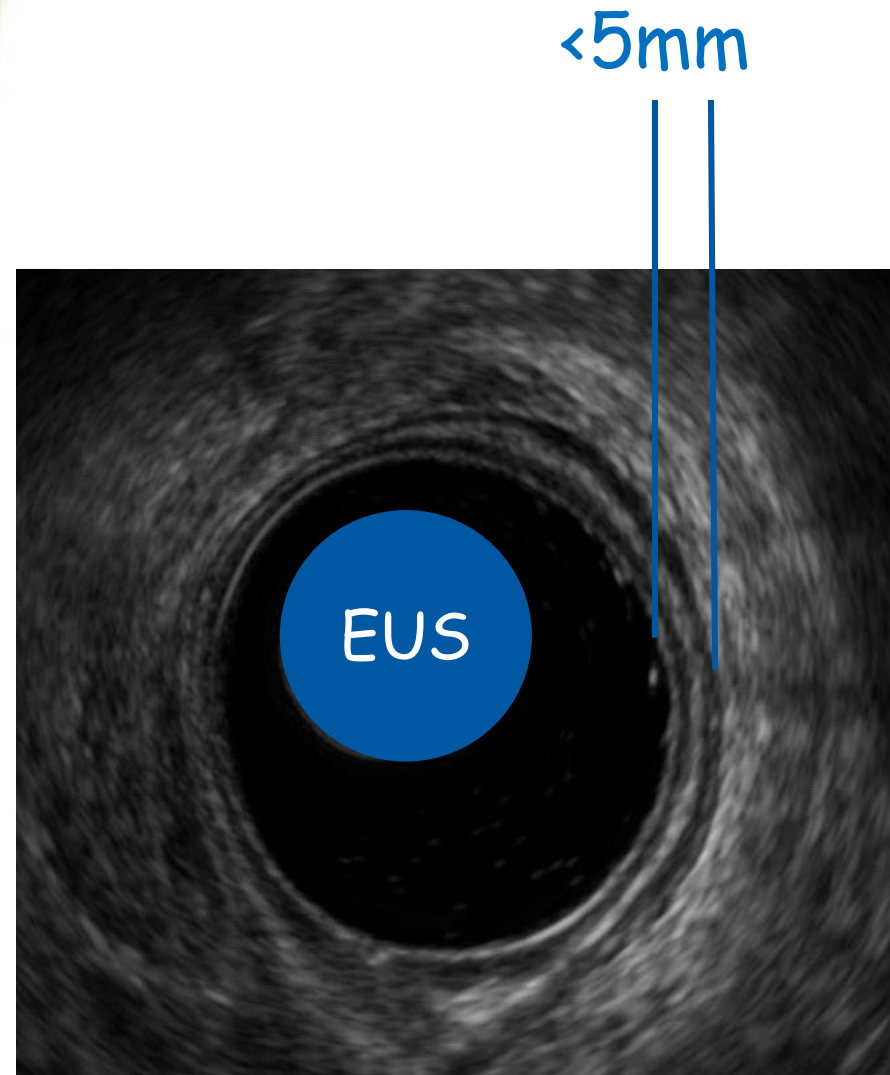
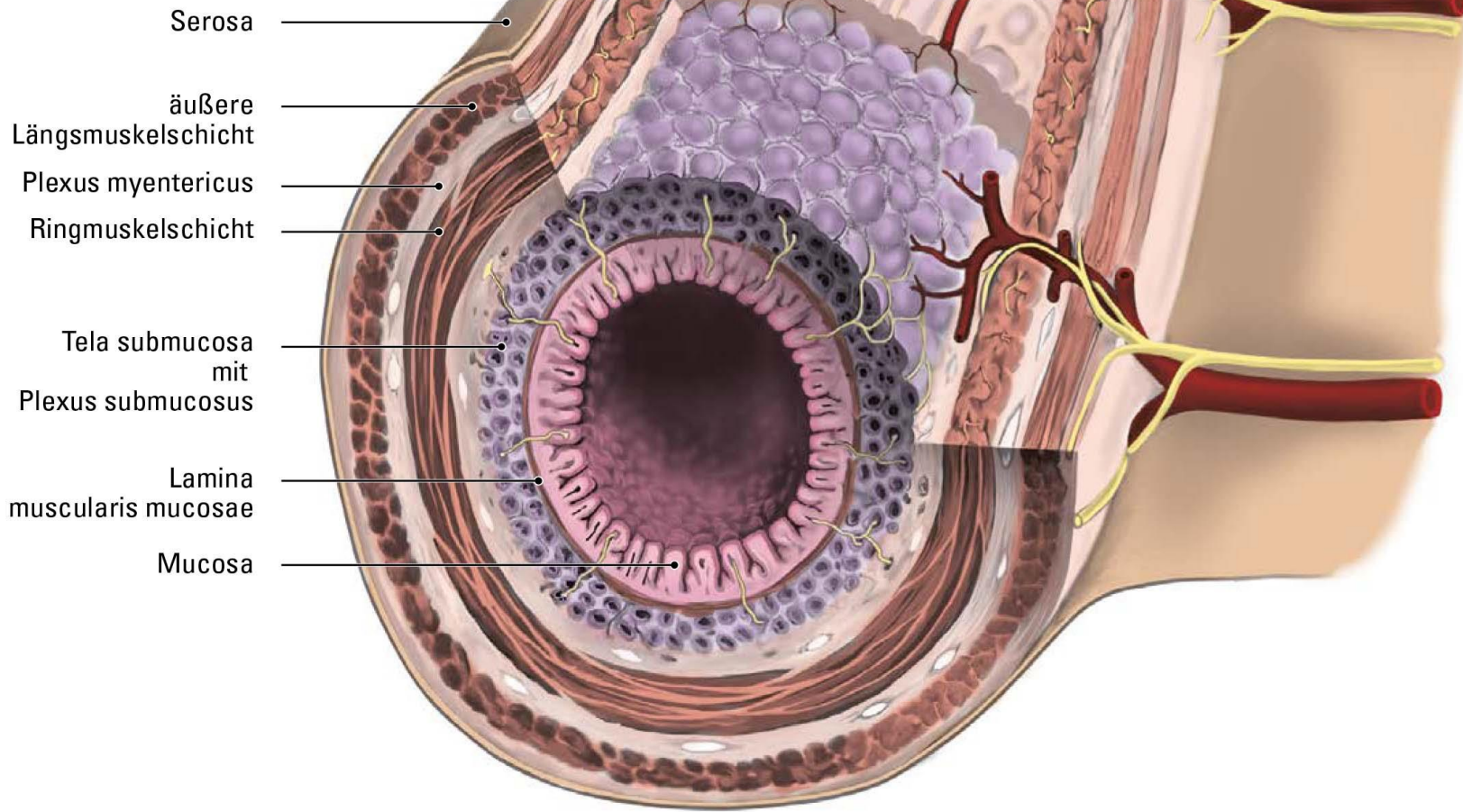
Reinigung

Gute lange Inspektion

Einsatz Filter = virtuelle Färbung

Färbung mit Essigsäure bei Barrett-Oesophagus

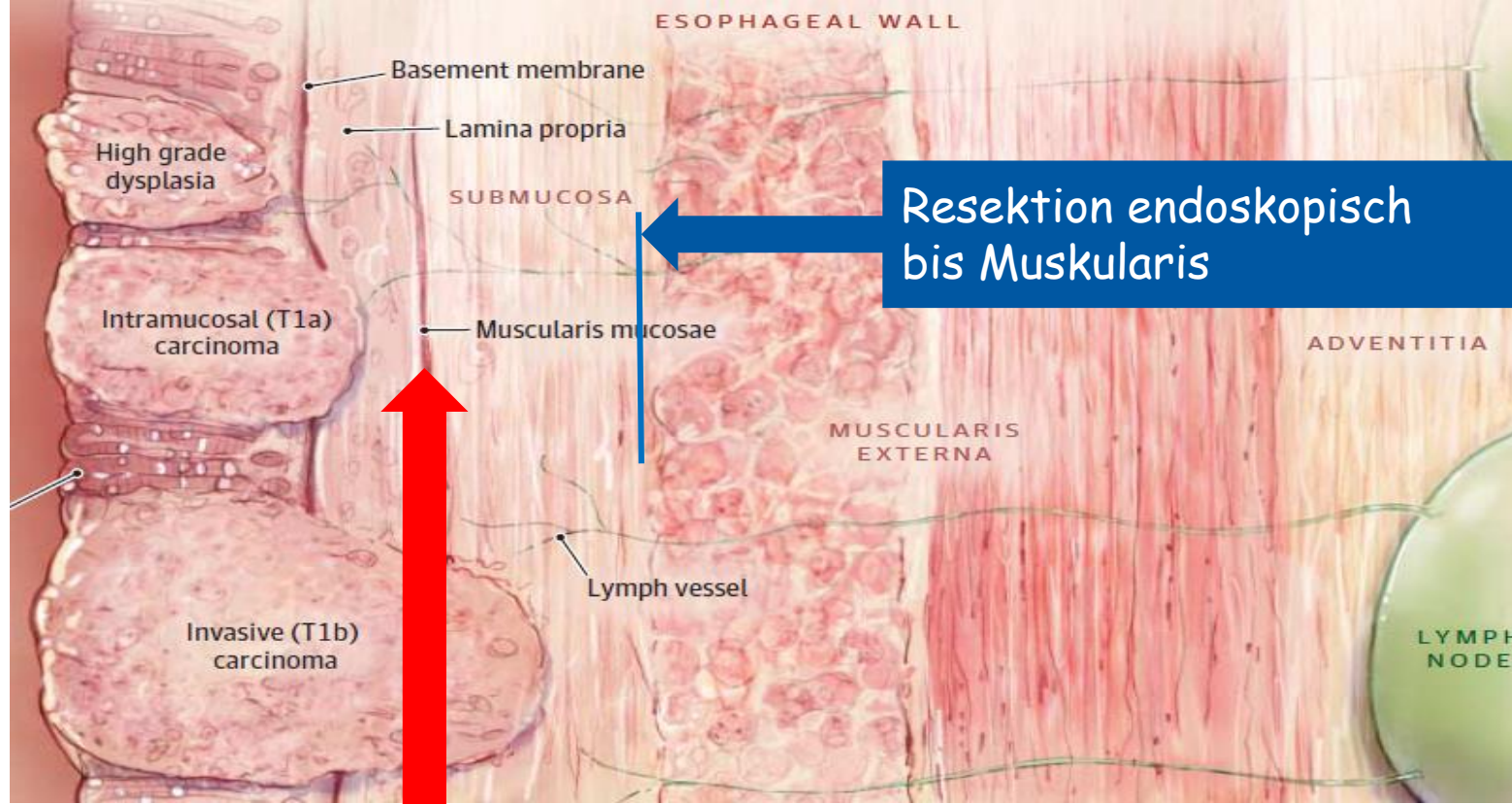






**Ablation**  
Hitze, Kälte

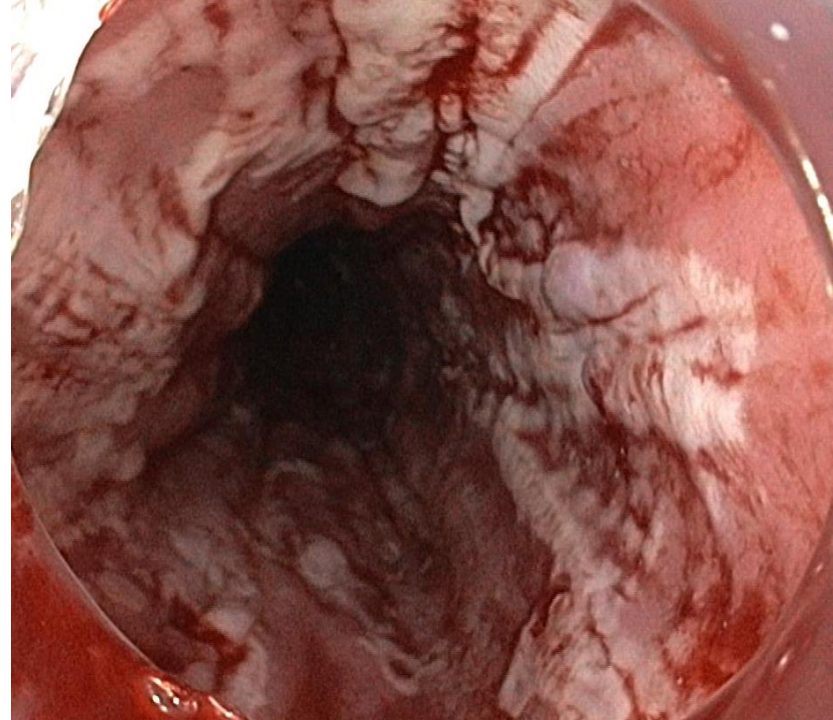
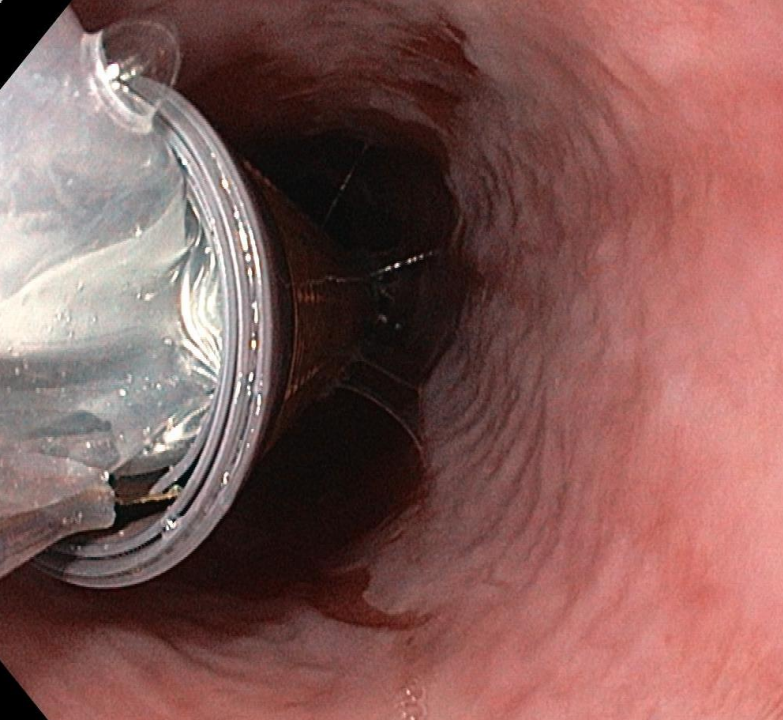
**Resektion**  
EMR & ESD



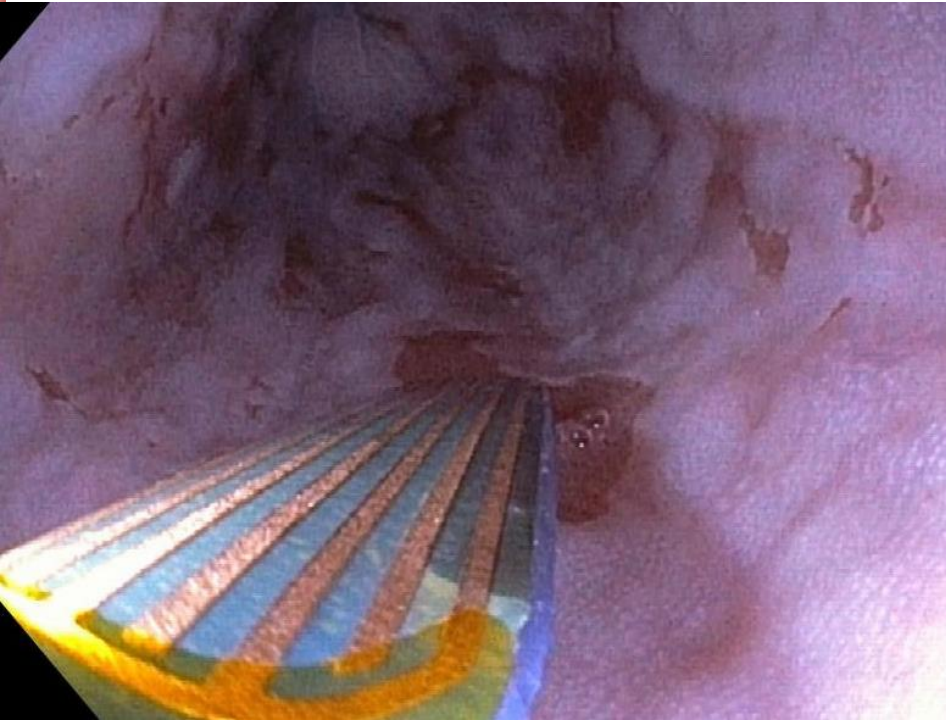
ab T1b

20% Lymphknotenmetastasen  
keine endoskopische Resektion mehr





Radiofrequenz  
= Zellen mit Hitze  
zerstören



UniversitätsSpital  
Zürich

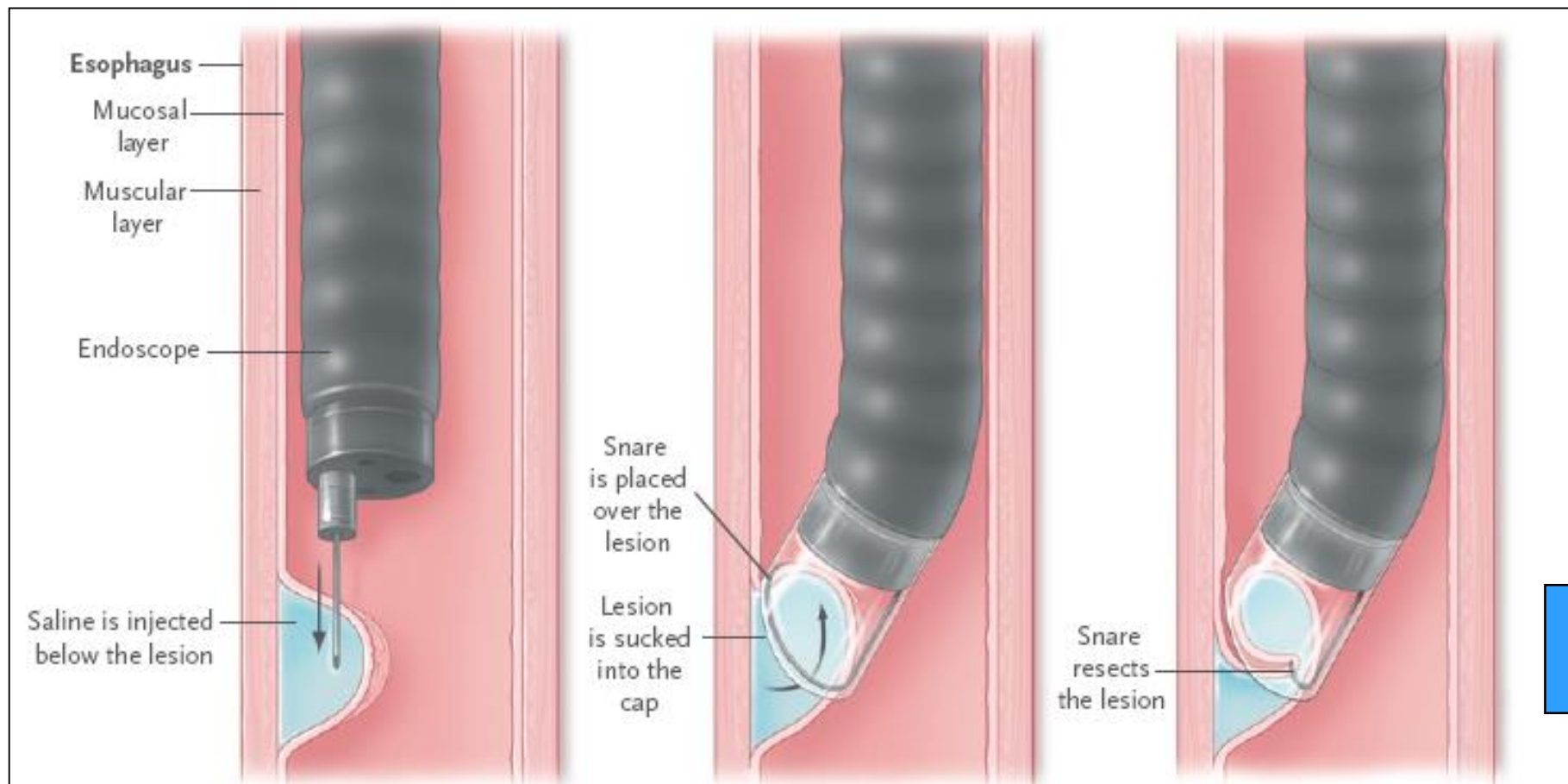


Universität  
Zürich<sup>UZH</sup>

# Endoskopische Resektionen

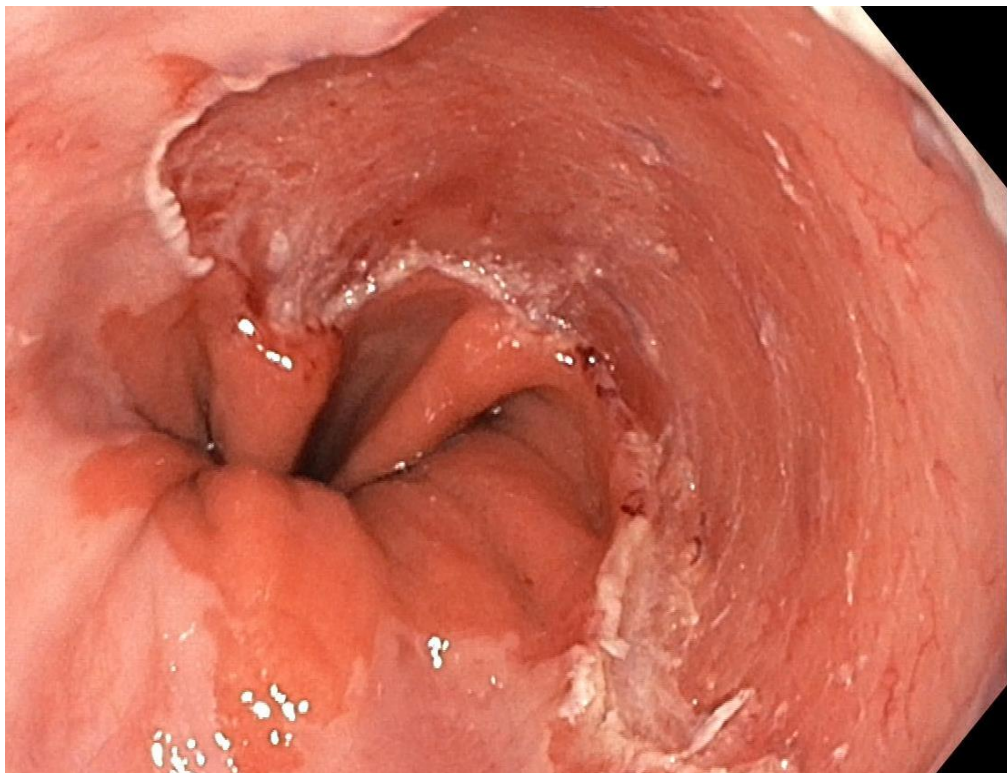
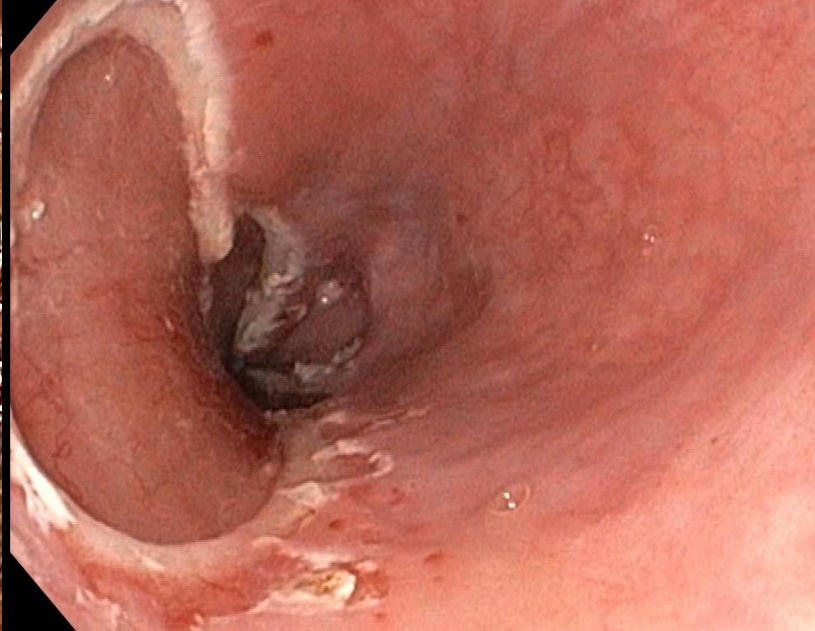
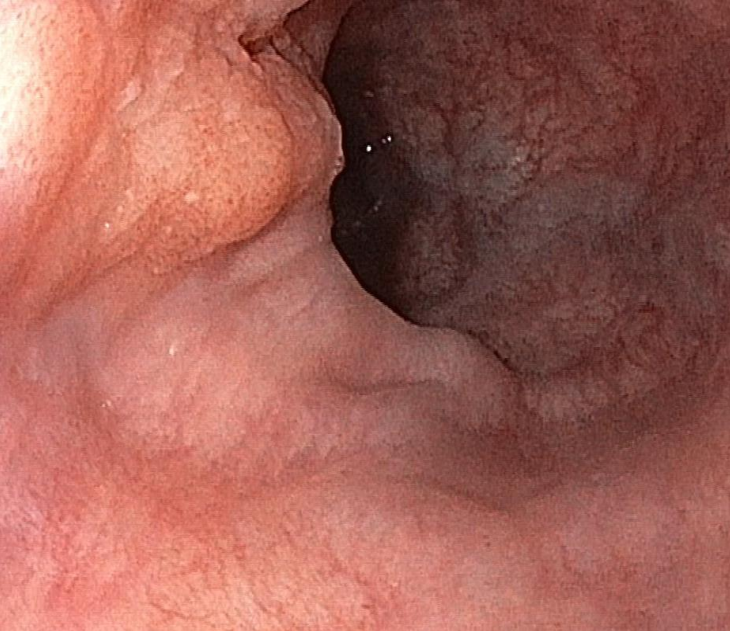
EMR = endoskopische Mucosaresektion in Stücken

ESD = endoskopische submucosale Dissektion en bloc



EMR

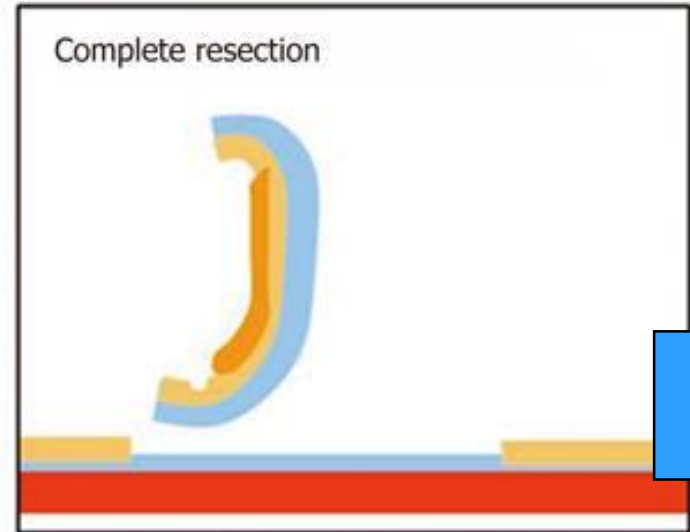
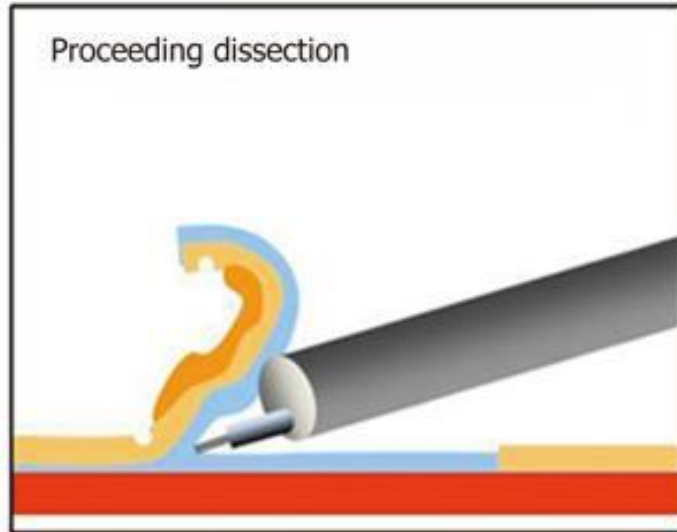
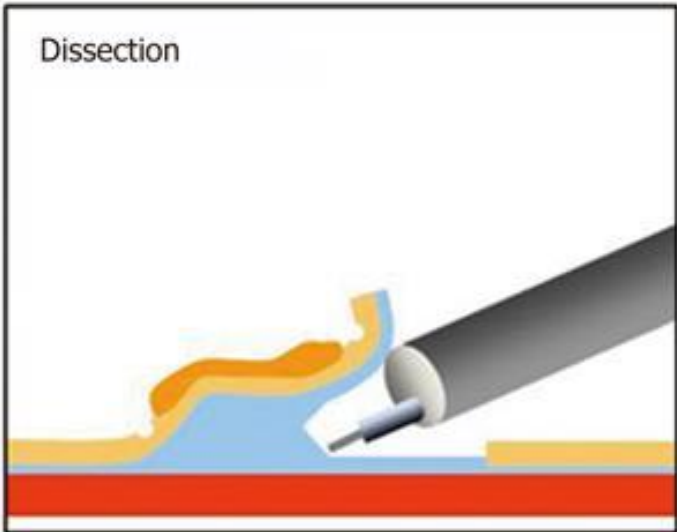
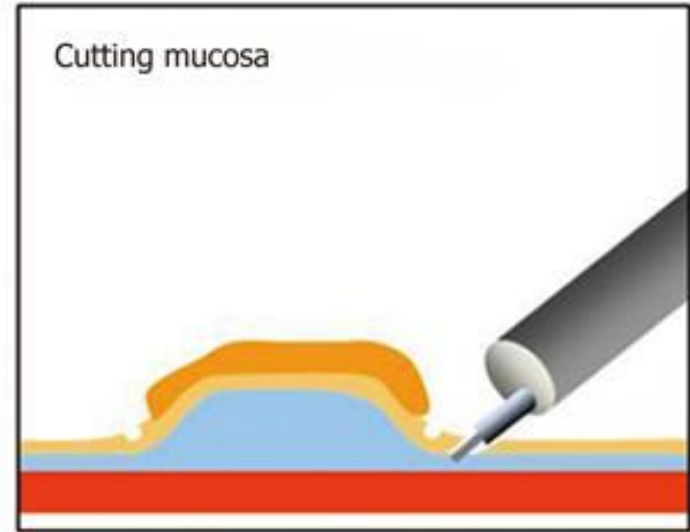
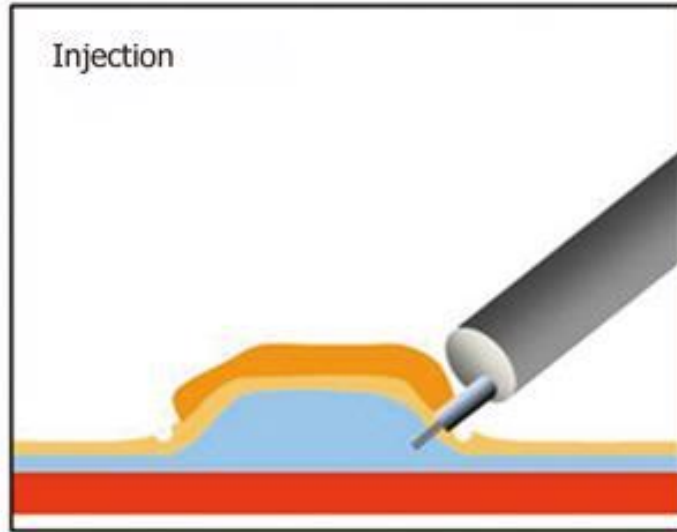
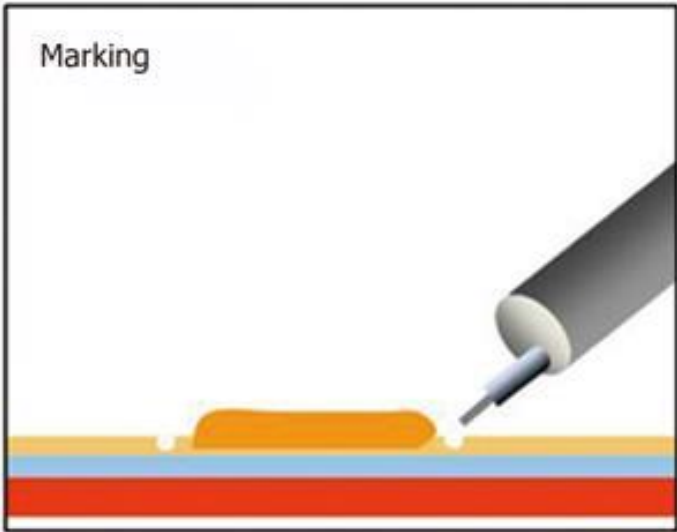




UniversitätsSpital  
Zürich

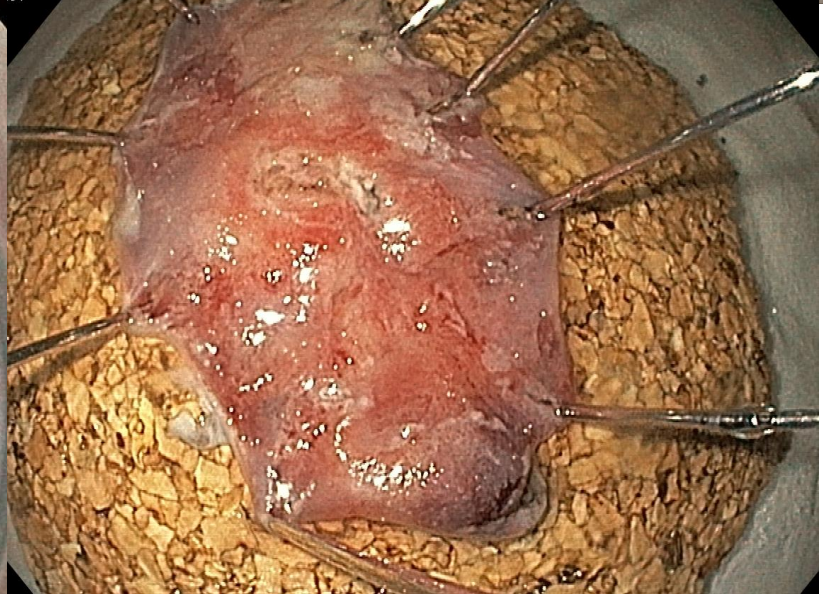
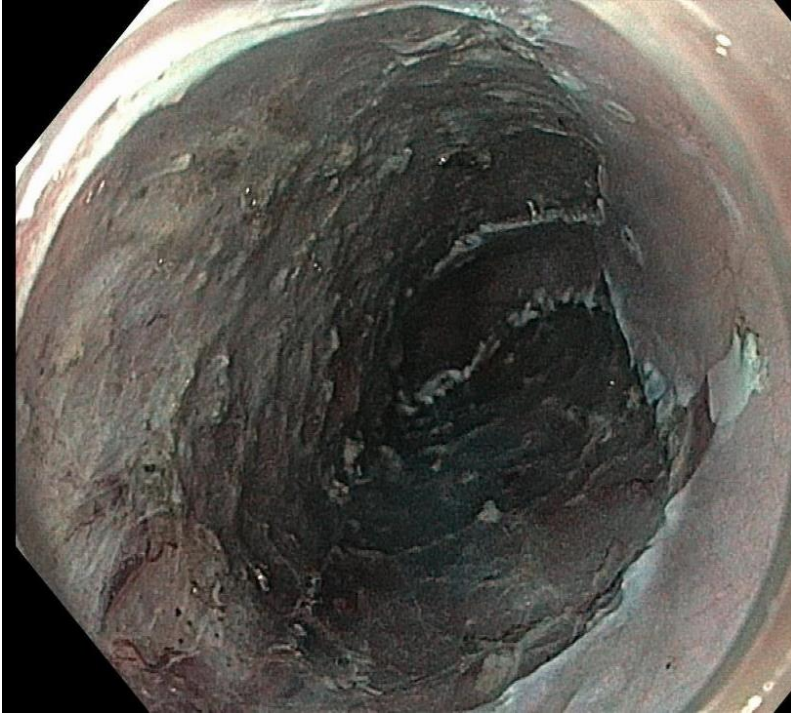
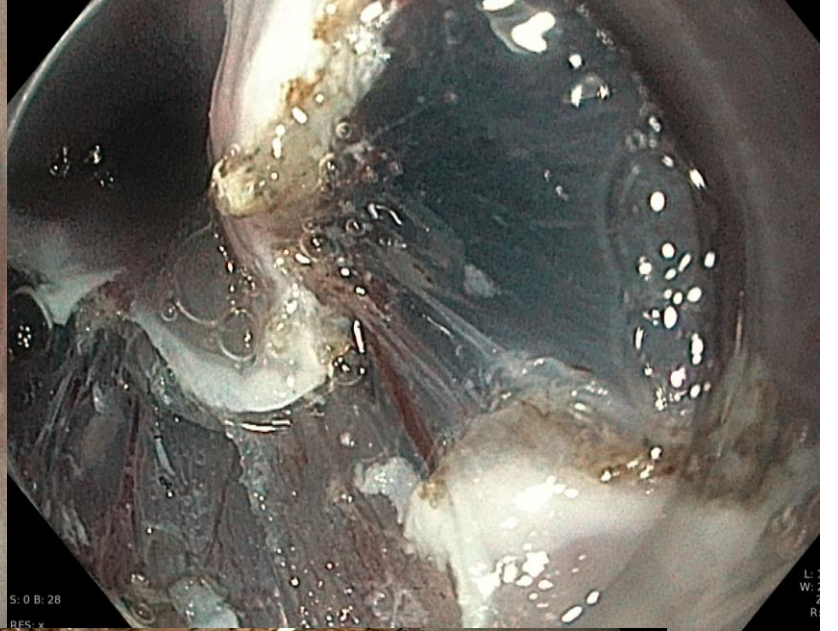
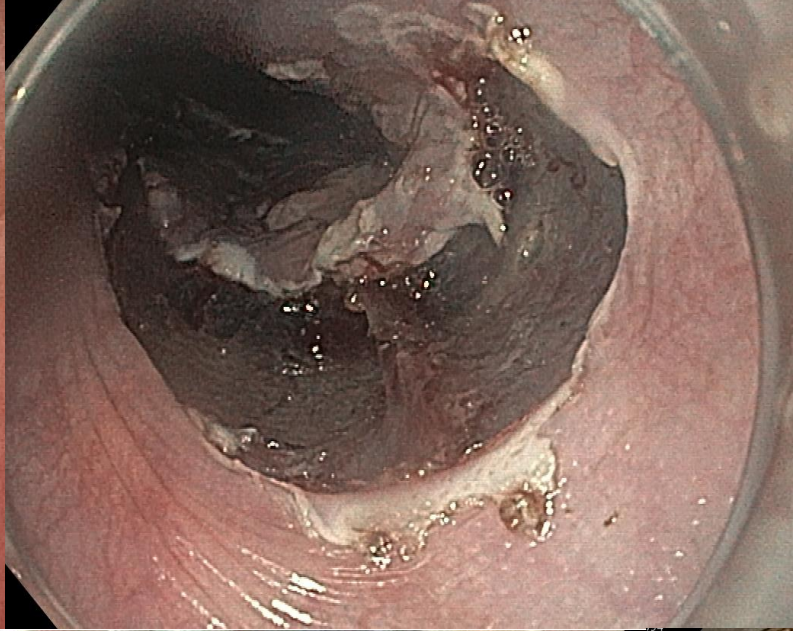
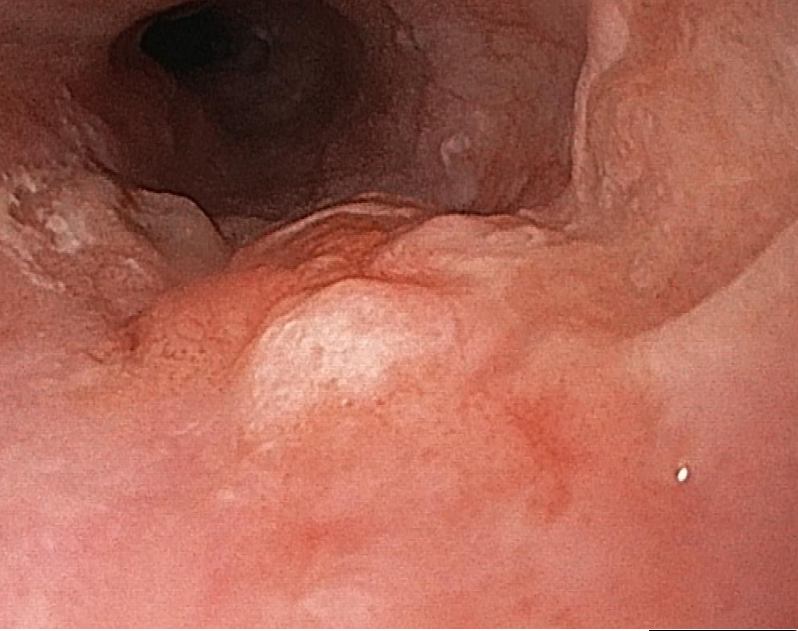


Universität  
Zürich<sup>UZH</sup>



ESD









**Bei Risikofaktoren:**

**Magenspiegelung  
suche Vorstufen**

**Barrett-Oesophagus:**

**Überwachung**

**Vorstufen/Frühkarzinom**

**endoskopisch therapieren  
= heilen**

